

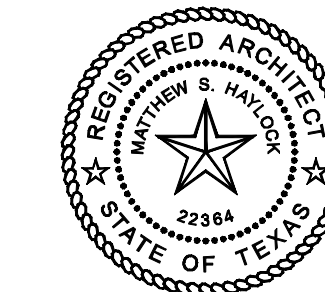
Site General Notes

- THIS SITE PLAN IS FOR GENERAL REFERENCE ONLY. REFER TO THE CIVIL ENGINEERING DRAWINGS FOR THE FINAL SITE DIMENSIONS, UTILITIES AND GRADING INFORMATION.
- ALL SIDEWALKS TO BE 5'-0" IN WIDTH UNLESS NOTED OTHERWISE.
- DETECTABLE WARNINGS ARE REQUIRED WHERE WALKS CROSS OR ADJOIN A VEHICULAR WAY AND ARE NOT SEPARATED BY A CURB OR OTHER ELEMENT.
- RAMPS ARE NOT TO EXCEED 1:12 SLOPE.
- CURB RAMPS SHALL HAVE A MAXIMUM SLOPE OF 1:12 AND SHALL BE A MINIMUM OF 36" WIDE. THE MAXIMUM CROSS SLOPES PERMITTED ON CURB RAMPS IS 2% (1:50). SIDE FLARES ARE REQUIRED TO BE SLOPED 1:10 MAXIMUM (1:12 MAXIMUM WHERE TOP LANDINGS ARE LESS THAN 48"W). SURFACES OF CURB RAMPS SHALL BE DETECTABLE WARNING SURFACES FOR THE FULL WIDTH AND DEPTH OF RAMP. RAMPS WITH RETURNED CURBS MAY BE USED WHERE PEDESTRIANS WOULD NOT NORMALLY WALK ACROSS THE RAMP.
- AN ACCESSIBLE ROUTE FROM PUBLIC TRANSPORTATION STOPS, PUBLIC STREETS AND SIDEWALKS, ACCESSIBLE PARKING SPACES AND PASSENGER LOADING ZONES TO AN ACCESSIBLE BUILDING ENTRANCE SHALL BE PROVIDED.
- ACCESSIBLE ENTRANCES AND PARKING SPACES SHALL BE IDENTIFIED WITH A SIGN SHOWING THE INTERNATIONAL SYMBOL OF ACCESSIBILITY.
- INACCESSIBLE ENTRANCES SHALL BE PROVIDED WITH SIGNAGE DIRECTING PATRONS TO ACCESSIBLE ENTRANCES.
- GENERAL PARKING AND PEDESTRIAN AREAS SHALL HAVE MINIMUM LIGHTING OF 2 FOOT CANDLES.
- PARKING SHALL BE SLOPED A MINIMUM OF 2% FOR SITE DRAINAGE. THE MAXIMUM SLOPE PERMITTED AT ACCESSIBLE PARKING SPACES AND ISLES AND ACCESSIBLE PATHS IS 2% IN ALL DIRECTIONS.
- LOCATE ALL METERS OUT OF DIRECT VIEW OF GUESTS.
- UTILITY TRANSFORMERS TO BE SCREENED FROM VIEW WITH LANDSCAPE OR SCREEN WALLS, EACH IN ACCORDANCE WITH LOCAL CODES, ORDINANCES AND HOLIDAY INN EXPRESS STANDARD.
- ALL DOWNSPOUTS SHALL BE TIED TO THE STORM SEWER SYSTEM.
- ALL SIGNAGE TO CONFORM TO ALL LOCAL CODES, ORDINANCES AND HOLIDAY INN EXPRESS STANDARD.

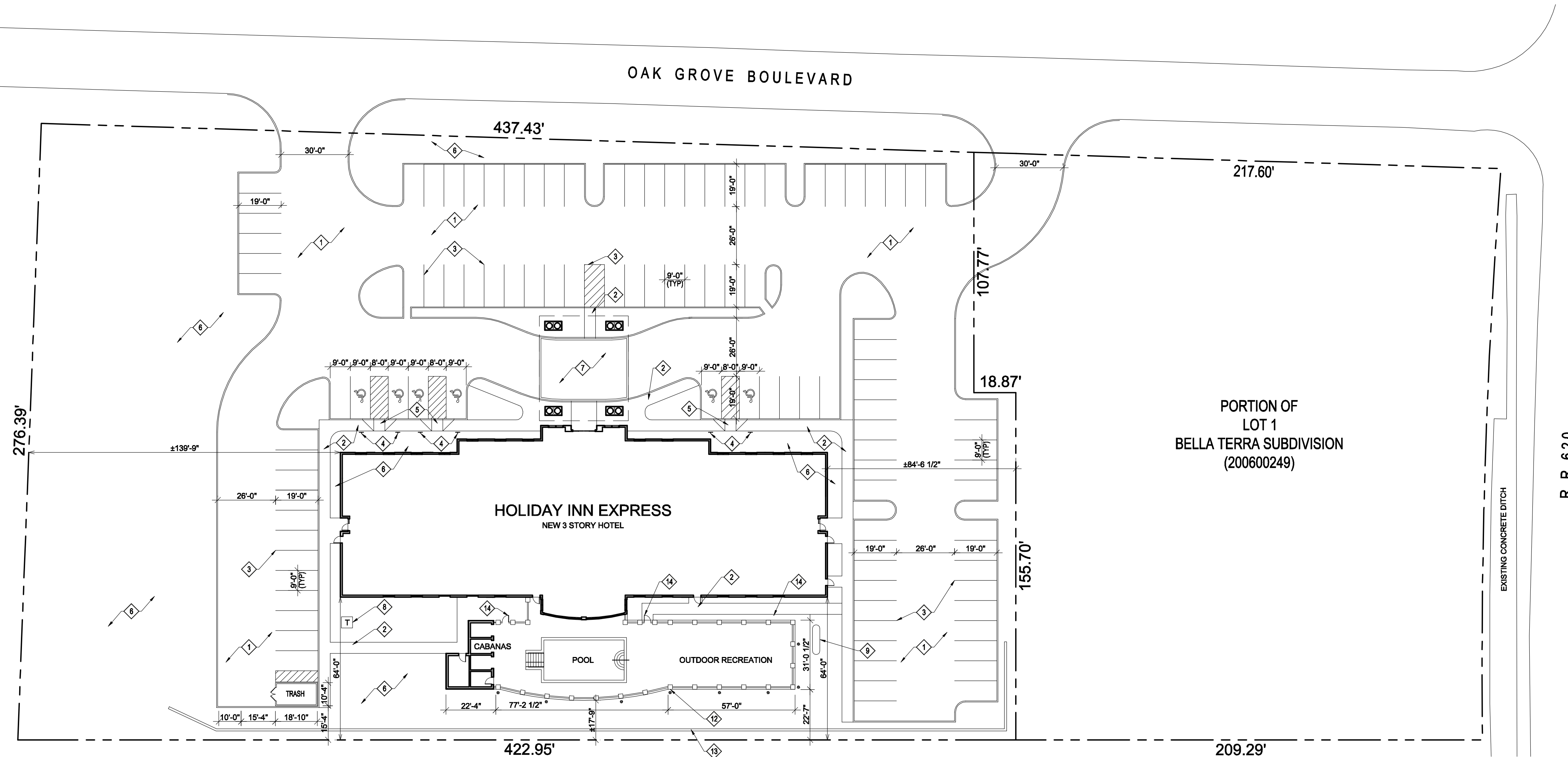
Site Plan Notes

- NEW PAVEMENT:
REFER TO CIVIL ENGINEERING DRAWINGS
- NEW CONCRETE SIDEWALK:
REFER TO CIVIL ENGINEERING DRAWINGS
- PAINTED PAVEMENT STRIPING - TYPICAL
REFER TO CIVIL ENGINEERING DRAWINGS
- "HANDICAPPED PARKING" SIGN - IN ACCORDANCE WITH LOCAL ORDINANCE.
- HANDICAPPED ACCESS RAMP
PROVIDE DETECTABLE WARNING W/ TRUNCATED DOMES
REFER TO CIVIL ENGINEERING DRAWINGS
- LANDSCAPED AREA:
REFER TO LANDSCAPE DRAWINGS
- BRICK PAVING - REFER TO LANDSCAPE DRAWINGS
- ELECTRICAL TRANSFORMER - REFER TO ELECTRICAL DRAWINGS
G.C. TO COORDINATE LOCATION WITH THE UTILITY COMPANY.
- UNDERGROUND 5,000 GALLON PROPANE TANK.
PROVIDE ALUMINUM FENCE WITH 3'-0" WIDE GATE AROUND FILL STATION.
G.C. TO COORDINATE LOCATION IN FIELD.
- BIKE RACK.
- MONUMENT SIGNAGE.
- POOL BARRIER: 7'-0" HIGH MASONRY WALL WITH 7'-10" HIGH MASONRY PIERS WITH STONE CAP. REFER TO DETAIL D.
- RETAINING WALL REFER TO CIVIL DOCUMENTS.
- 3'-0"W X 7'-0"H ALUMINUM GATE.
- 5'-0"H ALUMINUM FENCE

© COPYRIGHT HAYLOCK DESIGN, INC.
REPRODUCTION OF THE MATERIAL HEREIN, IN PART OR IN WHOLE, WITHOUT WRITTEN CONSENT OF HAYLOCK DESIGN, INC., IS IN VIOLATION OF THE COPYRIGHT LAWS OF THE UNITED STATES AND WILL BE SUBJECT TO LEGAL PROSECUTIONS.



Matthew S. Haylock
2/4/11



SITE PLAN

SCALE 1" = 30'-0"



6" HIGH STONE COPING W/ 1/2" DIA. X 10" STAINLESS STEEL ANCHORS (2 PER COPING PIECE) GROUTED INTO THE COPING & INTO THE WALL. SEAL ALL PENETRATIONS THRU FLASHING

SELF ADHERING CAP FLASHING W/ STAINLESS STEEL DRIP EDGING

LIMESTONE RETAINING WALL BY OTHERS

4" STONE VENEER W/ GALV. METAL TIES @ 16" O.C. VERT OVER 8" CMU GROUTED SOLID

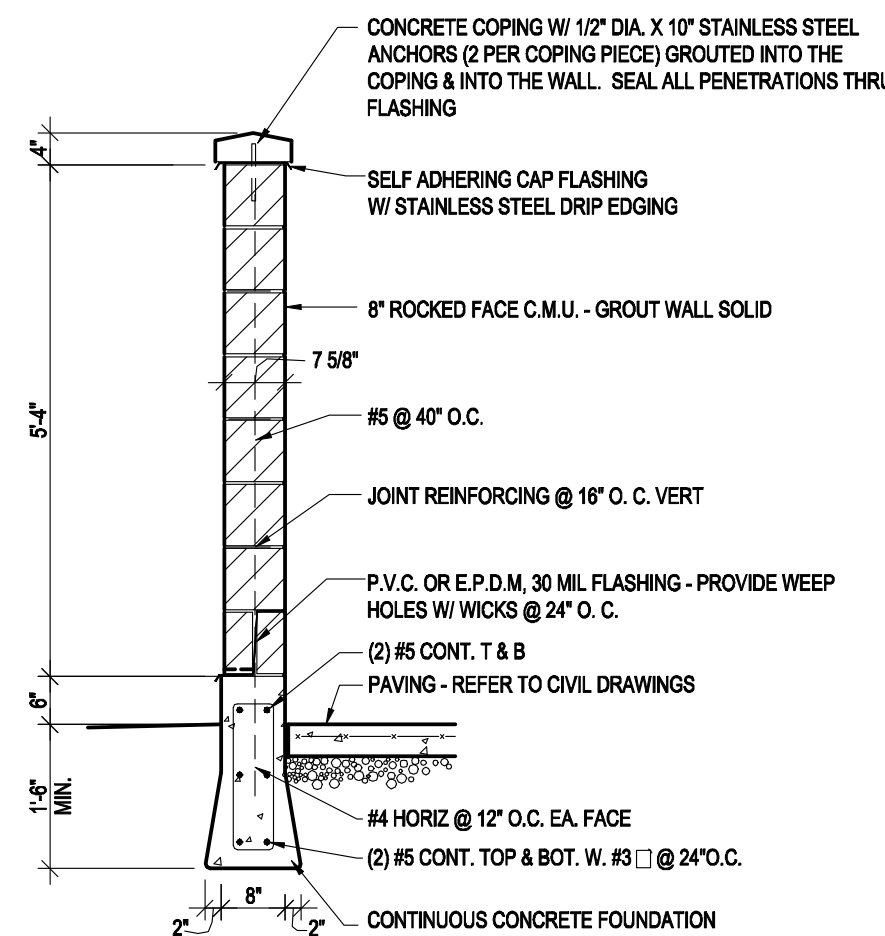
#4 BAR IN EACH VERTICAL CELL

PAVING - REFER TO CIVIL DRAWINGS

CONTINUOUS CONCRETE FOUNDATION RE: STRUCTURAL FOR REBAR AND CONCRETE SPECIFICATIONS

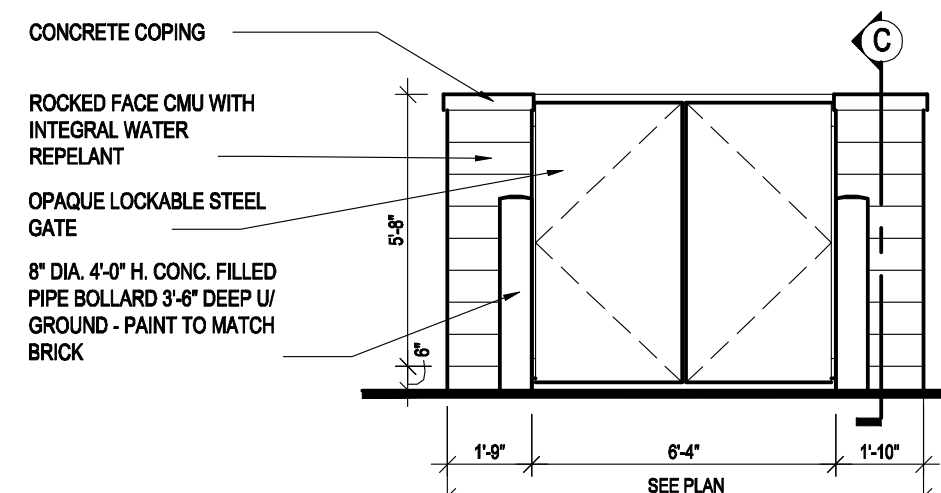
D SECTION THRU PIER

SCALE 1/2" = 1'-0"



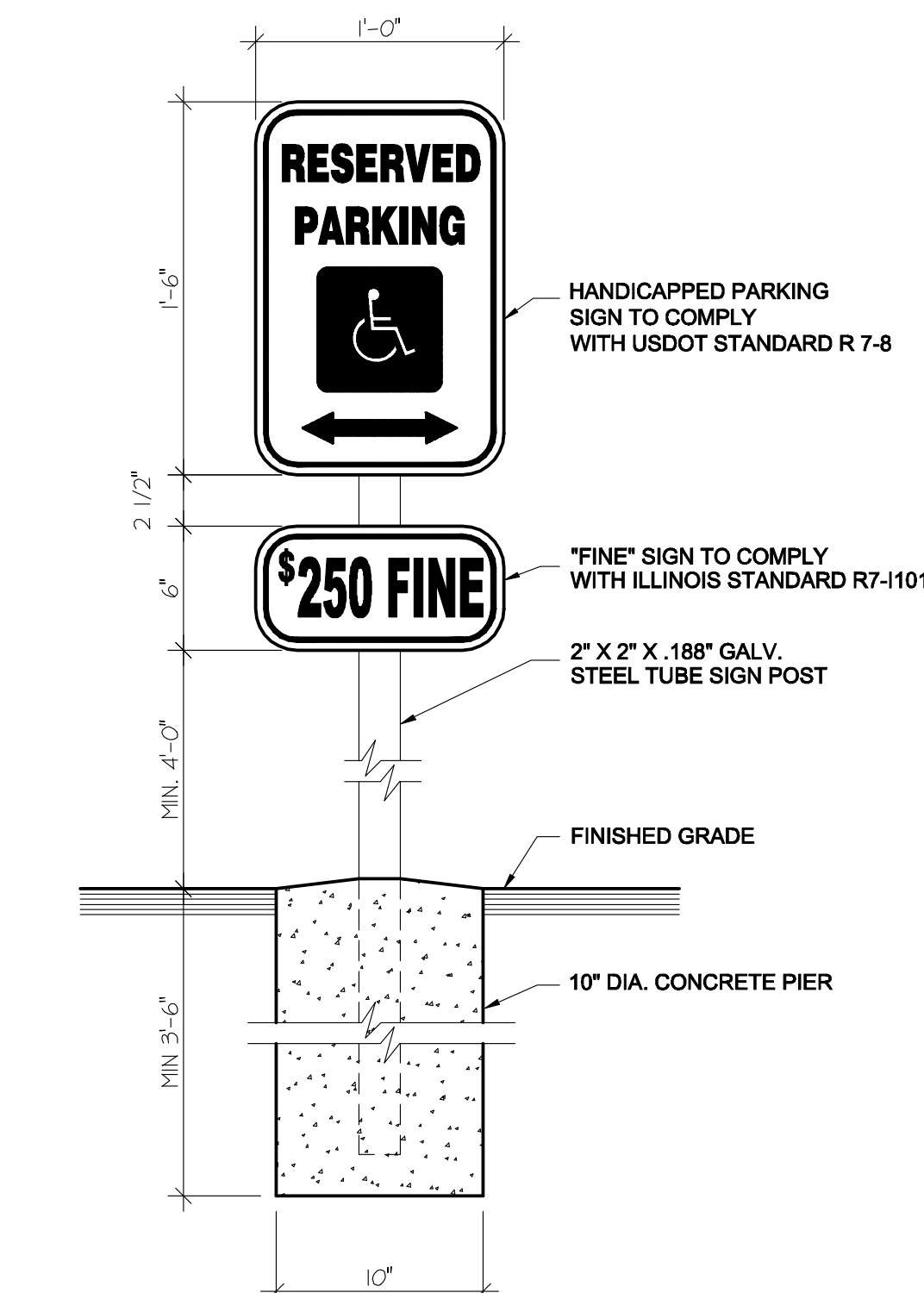
C SECTION THRU TRASH ENCLOSURE

SCALE 1/2" = 1'-0"



B TRASH ENCLOSURE FRONT WALL

SCALE 1/4" = 1'-0"



A HANDICAP PARKING SIGN

NO SCALE

